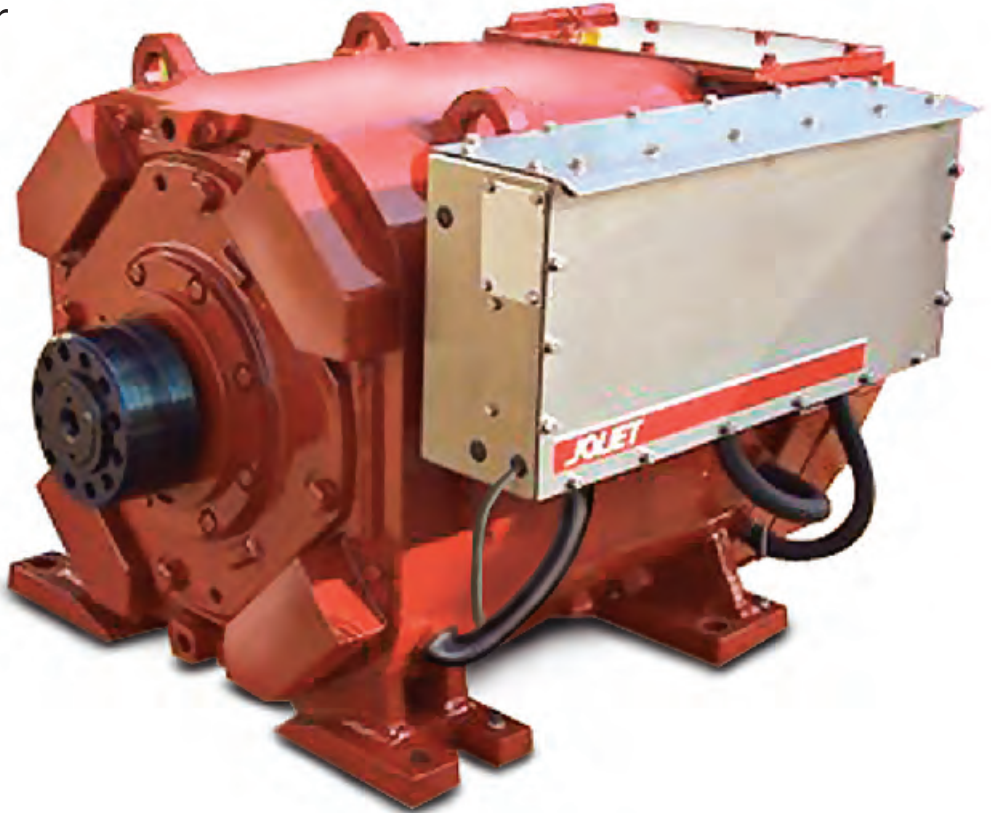


JOLIET C75ZB(E) Drilling Motor

Joliet Equipment Corporation...
the quality source for
Drilling Motors.
For more than 70
years our motors
have delivered
Quality, Value and
Reliability...
Day-in—Day-out.



The **Joliet C75B Series Wound Remanufactured Drilling Motor** delivers a continuous 1000 HP rating for mud pump and rotary table applications and boasts an impressive intermittent rating of 1250HP for drawworks duty. The continuous rating is at 750VDC, 1050 Amperes, 965 RPM.

The **Joliet C75E Shunt Wound Remanufactured Drilling Motor** delivers a continuous 1000 HP rating for mud pump and rotary table applications and boasts an impressive intermittent rating of 1250HP for drawworks duty. The continuous rating is at 750VDC, 1050 Amperes, 1040 RPM.

Joliet's C75B(E) has proven reliability throughout the drilling & marine industries and continues to meet & exceed all expectations. The **Joliet C75B(E)** provides competitive pricing and unsurpassed quality.

JOLIET

Joliet Equipment Corporation
Joliet Electric Motor Co.
P.O. Box 114
Joliet, Illinois 60434 USA

(800) 435-9350 (713) 467-7559
Fax: (713) 467-7887
www.joliet-equipment.com • tractionmotors.com

Features

Joliet C75ZB and C75ZE

- ✓ Self excited Remanufactured series field (C75ZB Model).
- ✓ New Separately excited shunt field (C75ZE Model).
- ✓ Remanufactured GE Armature, Single Tapered shaft extension with New Oilfield hub.
- ✓ Class H insulation
- ✓ New Heavy Duty Pressurized connection box mounted on left side of motor as viewed from commutator end, with double bolt on armature cable connections and terminations for space heater, auxiliary switch, and pressure sensor. Connection box can be specified on right side.
- ✓ New Space Heater, 120/240 Volts, Explosion Proof.
- ✓ New Crouse-Hinds Auxiliary lockout switch, Explosion Proof.
- ✓ New Blower Assembly, 10HP, Explosion Proof, 460 Volt, 60 Hz, providing 2800 SCFM of cooling.
- ✓ New Dywer Pressure sensor, Explosion Proof.
- ✓ NEW FACTORY DRILLING FRAME
- ✓ Approximate Weight: 7,225 lbs., 3275 kg.

Three Key Features Distinguish Joliet's C75ZB From The Competition

1 Dimensionally Interchangeable with the 752 (no variances in blower mounts, no welded feet, etc.)

2 Competitively Priced

3 Superior Quality



Joliet C75ZB Drive End View



Joliet C75ZB Opposite Drive End

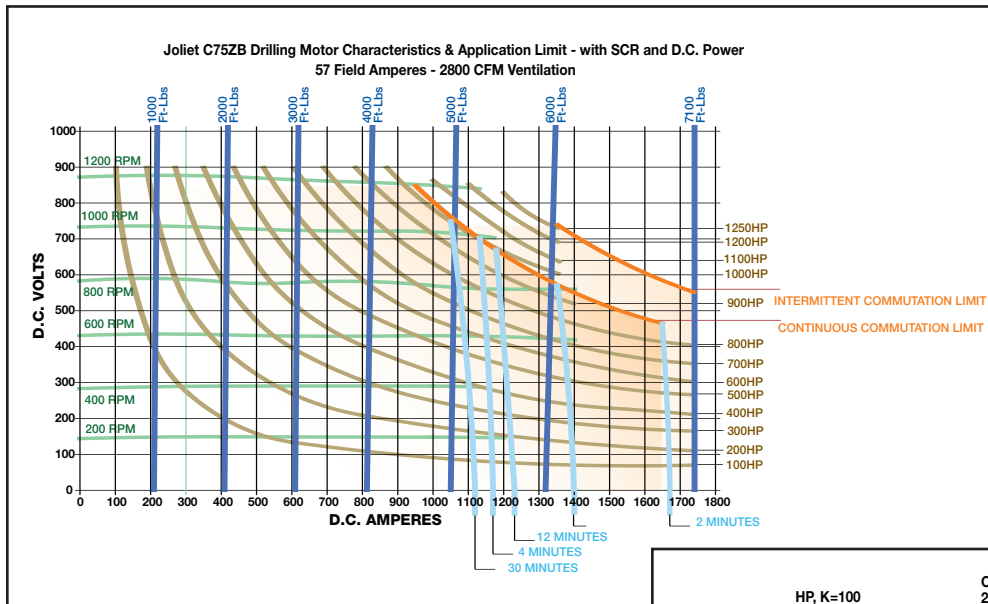


Joliet C75ZB New Drilling Frame Opposite Drive End View



Joliet C75ZB New Drilling Frame Drive End View

Performance / Specifications

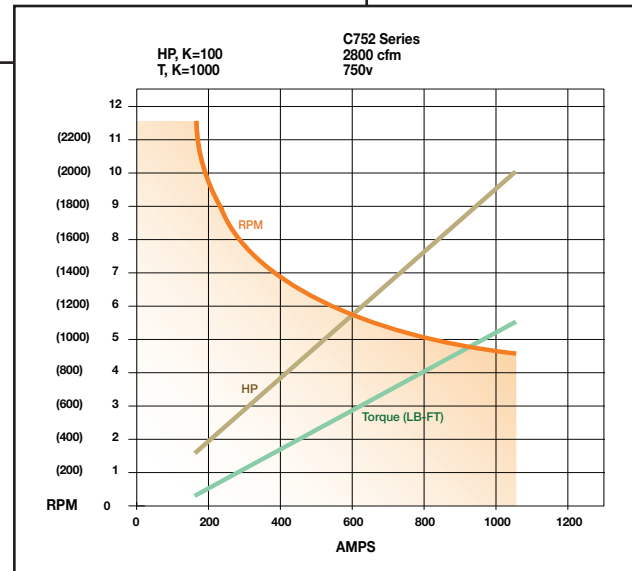


Shunt Wound

- 1000 HP continuous duty
- 1250 HP intermittent duty
- 750 Volts, 57 Amps., 1050 RPM
- Class H insulation

Series Wound

- 1000 HP continuous duty
- 1250 HP intermittent duty
- 750 VDC, 1050 Amperes, 975 RPM
- Class H insulation



ADDITIONAL SPECIFICATIONS

C75ZB

- Force Ventilated
- (2) Part Epoxy Paint System, Grey in Color
- Leads: 535 MCM
- Inspection Covers: Bolt-on or Snap-on type
- 5200 Ft. Lbs. Torque
- Print#98B342 – Motor w/o Blower
- Print#98B332 – Motor with Blower 10HP Blower unit

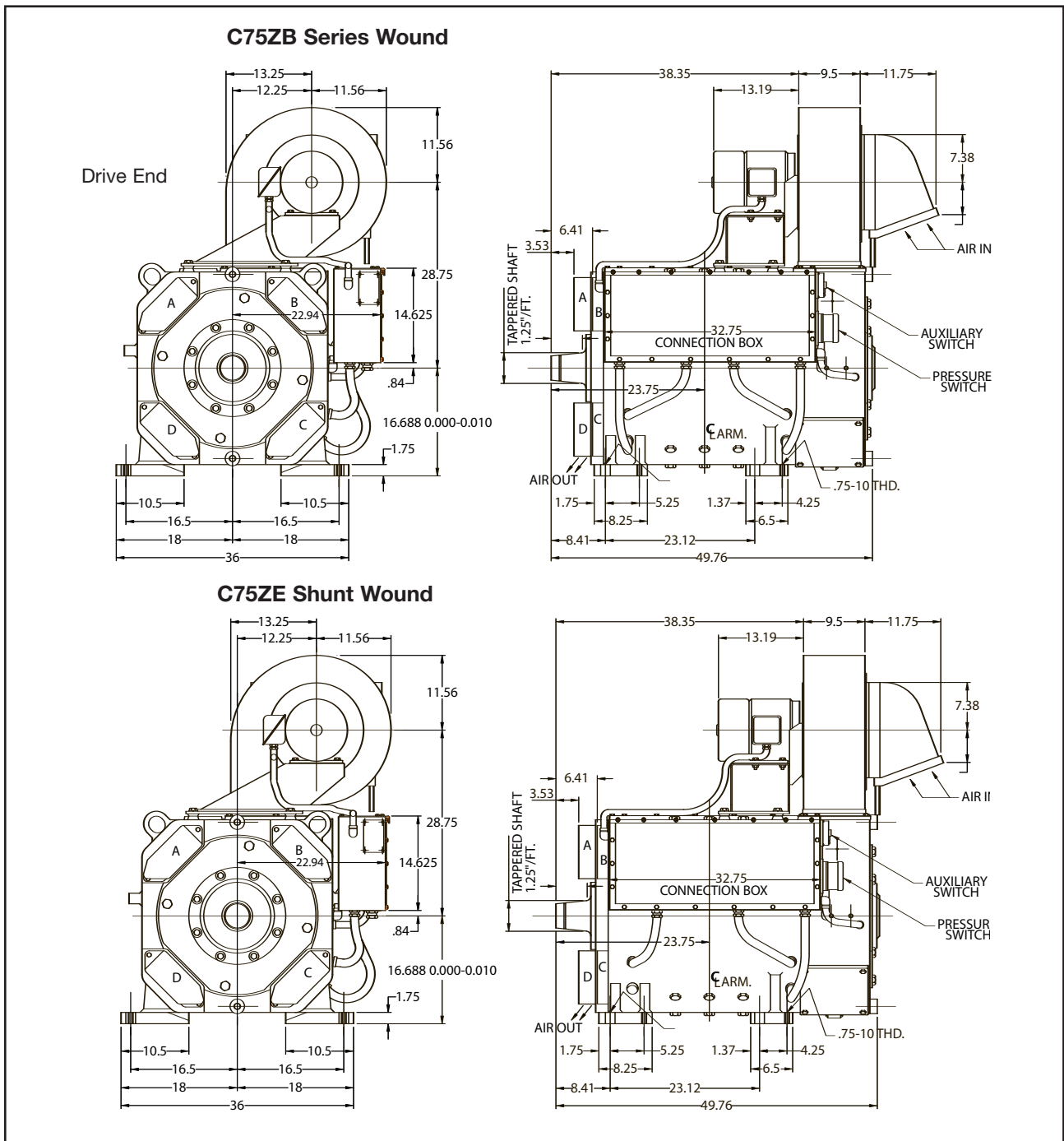
C75ZE

- Force Ventilated
- (2) Part Epoxy Paint System, Grey in Color
- Leads: 535 MCM
- Inspection Covers: Bolt-on or Snap-on type
- 5050 Ft. Lbs. Torque
- Print#01B333 – Motor w/o Blower
- Print#01B334 – Motor with Blower 10HP Blower unit

JOLIET

Joliet Equipment Corporation
Joliet Electric Motor Co.

C75ZB(E) Dimensions



Not to be used for construction.

Approximate Weight: 7,225 lbs

Dimensions are in inches.



Joliet Equipment Corporation
Joliet Electric Motor Co.
 P.O. Box 114
 Joliet, Illinois 60434 USA

(800) 435-9350 (713) 467-7559
 Fax: (713) 467-7887
 www.joliet-equipment.com • tractionmotors.com